

AIRY/N

ES

Montaje: Adosable.

Fuente de luz: Módulos lineales LED SMD.
Temperatura de color 4000K. Disponible, 3000K.

Sistema óptico: Reflector aluminio brillante.

Distribución luminosa: Directa.

Equipo eléctrico: Equipo de control electrónico. PF>0,95.
Disponible, regulable 1-10V o DALI y/o kit emergencia (1-3 h).

Materiales: Cuerpo: Acero de alta resistencia a la torsión y espesores mínimos garantizados de 0,6mm, según Normas ENEC-10 y VDE.
Difusor: aluminio brillante.

Acabado: Color blanco RAL 9003.



EN

Mounting: Surface.

Light source: LED linear modules SMD.
Temperature color 4000K. Available, 3000K.

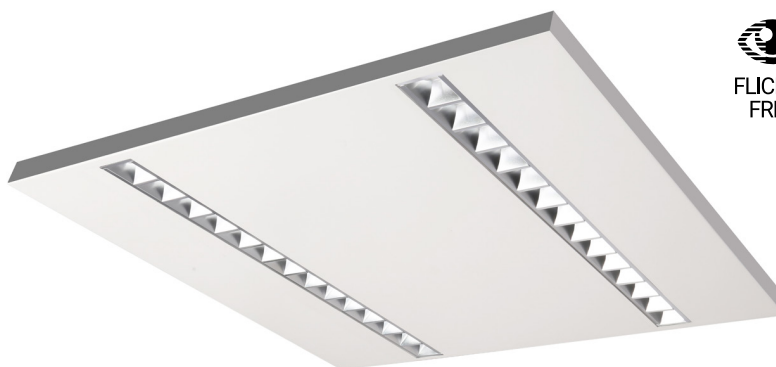
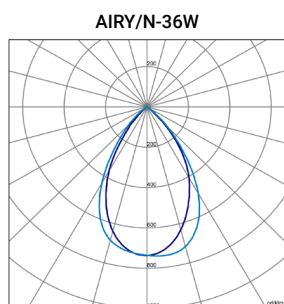
Optical system: Bright aluminum reflector.

Light distribution: Direct.

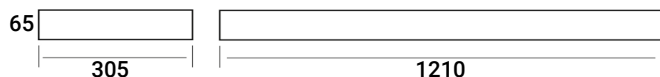
Electrical equipment: Electronic control gear. PF>0,95.
Available, dimmable 1-10V or DALI and/or emergency kit (1-3 h).

Materials: Body: High resistance steel with guaranteed minimum thickness of 0.6mm, according to ENEC-10 and VDE standards.
Diffuser: Bright aluminum.

Surface finish: White color RAL 9003.



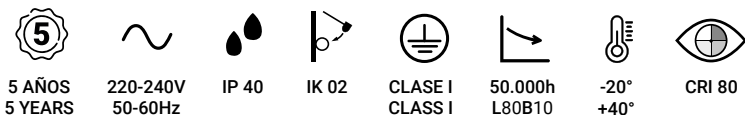
AIRY/N (1195x295) + KIT ADOSAR



AIRY/N (595x595) +KIT ADOSAR



ESTANDAR/STANDARD



DISPONIBLE/AVAILABLE



CONFIGURACION ONLINE ONLINE CONFIGURATION



Código Code	Referencia Reference	Kg Kg	Potencia Power	Lúmenes Lumens	Eficiencia Efficiency	CCT (K) CCT (K)
AIN225KLBN	AIRY/N-36W 5220Lm/840 LM (595X595)+KIT ADOSAR/SURFACE	3,0	36W	5220	145 lm/W	4000
AIN225K2BN	AIRY/N-36W 5220Lm/840 PH/TR (595X595)+KIT ADOSAR/SURFACE	3,0	36W	5220	145 lm/W	4000
AIN225KEBN	AIRY/N-36W 5220Lm/840 TR EU (595X595)+KIT ADOSAR/SURFACE	3,0	36W	5220	145 lm/W	4000
AIN315KLBN	AIRY/N-36W 5220Lm/840 LM (1195X295)+KIT ADOSAR/SURFACE	3,0	36W	5220	145 lm/W	4000
AIN315K2BN	AIRY/N-36W 5220Lm/840 PH/TR (1195X295)+KIT ADOSAR/SURFACE	3,0	36W	5220	145 lm/W	4000
AIN315KEBN	AIRY/N-36W 5220Lm/840 TR EU (1195X295)+KIT ADOSAR/SURFACE	3,0	36W	5220	145 lm/W	4000

ACCESORIOS DISPONIBLES/AVAILABLE ACCESSORIES

REGULACION/DIMING 1-10V | DALI KIT DE EMERGENCIA/EMERGENCY KIT 1h | 3h T.COLOR 3000K SET DE SUSPENSION/SUSPENSION SET
DETECTOR DE PRESENCIA (SLP)/PRESENCE DETECTOR (SLP) REGULADOR DE LUZ + DETECTOR DE PRESENCIA (RLP)/AMBIENT LIGHT + PRESENCE SENSOR (RLP)